

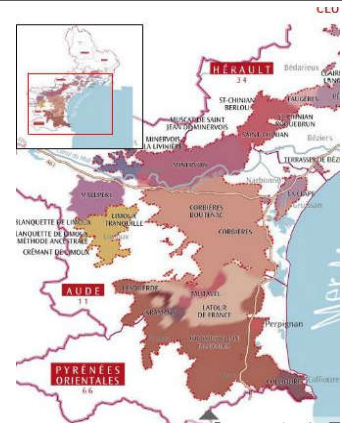
HB Wine Merchants presents wines from: **M. Chapoutier**



FRANCE

Les Vignes de Bila-Haut Rosé

IGP Pays d'Oc



Brand Highlights

- Great-Selling wine in the category!
- 87 Points from the Wine Enthusiast for 2014 Vintage
- Blend of 55% Grenache and 45% Syrah

The Estate

Purchased by Michel Chapoutier in 1999, Bila-Haut is located in an the best part of the Languedoc called the Côtes du Roussillon. Historically the site was one of the first areas planted for viticulture by the Greek Mariners and has been continuously a wine region known for making top quality wines. The House of Bila—the translation of the name of the estate—was once a house of refuge for the Knights Templar, which is why their cross is symbolically used on the label. In the hills of the Agly Valley, 40+ year old vines are carefully and meticulously managed by an experienced team of viticulturalists, where sustainable farming and low yields combine to create the highest quality fruit. Wine is made in the vineyards, by paying careful attention to the plants and working alongside nature.

Wine Making

In searching to create a perfectly styled Rosé, Michel Chapoutier has altered the cépage to include Grenache and Syrah. The grapes are carefully vinified at low, even temperatures. The juice is fermented in temperature-controlled, stainless-steel tanks and aged in those tanks. After a short maceration on the skins, the delicate pink hue is attained and the wine is racked and vinified. The wine is then carefully blended prior to bottling.

Tasting Notes

Each of the varieties in the blend offers up their unique flavors to combine a refreshing and crisp wine with “high resolution” of flavors. The Grenache supplies the crisp mineral flavors with a hint of citrus in the lingering finish.

Press

- ◆ 2014 Vintage 87 Points—Wine Enthusiast
- ◆ 2014 Vintage 88 Points—Vinous
- ◆ 2013 Vintage 88 Points—Wine Spectator
- ◆ 2012 Vintage 88 Points—Wine Spectator

Product Specifications

- Available in: 750mL w/Natural Cork
- UPC: 8 75734 00010 3
- SCC: 1 08 75734 00010 0
- Case (in.): 13.5 x 10.25 x 12